



# MCLACHLAN

*Built around lifestyle.*

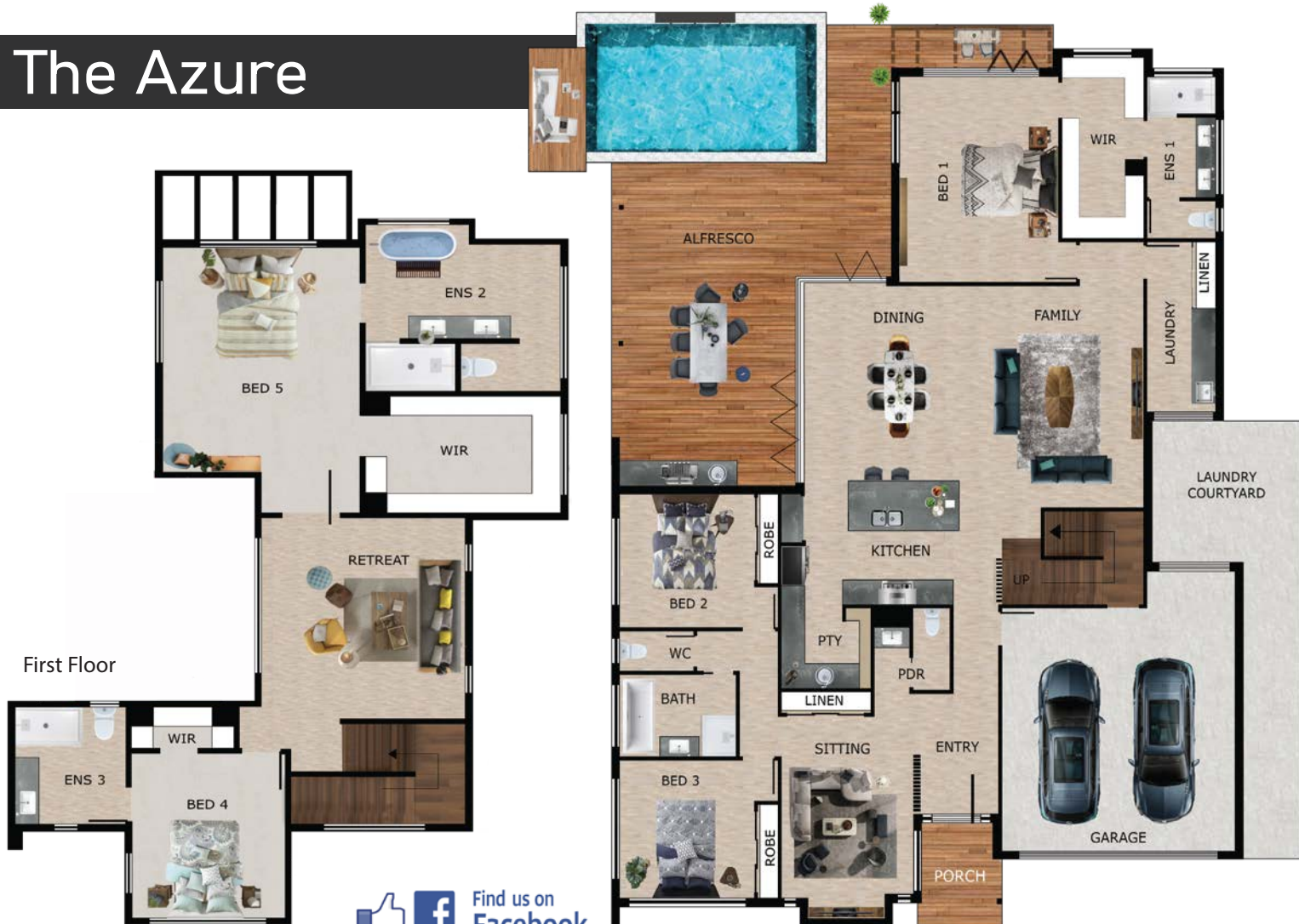


## QUICK FACTS



Ground Floor	247.67 M2
Alfresco	37.90 M2
Porch	5.29 M2
First Floor	101.54 M2
Courtyard	6.27 M2
<b>TOTAL AREA</b>	<b>398.67 M2</b>
Length 22,380 x Width 16,300	

## The Azure



Find us on Facebook

find us on @McLachlanHomes

Ground Floor

Contact us today.  
(07) 5498 9866



Unique Designs to Inspire.



# MCLACHLAN

Call us on (07) 5498 9866

## The McLachlan Homes Difference.

Since opening our first display in 1997, McLachlan Homes ongoing passion & drive for providing customers with high-quality designs is second to none.

We are committed to providing one-on-one personalized customer service & the freedom to for you to design your home to your lifestyle, taste and budget.

With the completion of more than 2300 Homes for Queenslanders our long standing team take pride in offering solutions to a wide range of needs. With design solutions ranging from small lot, steep block, acreage, Dual occupancy, and beyond.

McLachlan Homes stand true to their motto of 'built around lifestyle', with each project being built around the customers' individual needs, the overall idea is to offer flexibility.



[www.mclachlanhomes.com](http://www.mclachlanhomes.com)

Please note these images are for general purpose only & are not to be taken literally as this design. McLachlan Special Projects accepts no liability for any change to any details within the illustrated plan. QBCC 152 25895